

er was eens

Bass in Eb

A (1-8)



5 **B** (3 keer: 9-14 - 15-20 - 21-26)



11 **C** (27-34)



15

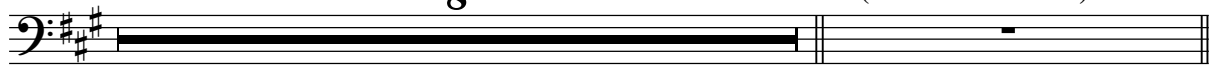


19

D

8

(A 8 maten: 43-50)



28

E (en dehors: 51-57)



31



35

(C=8 maten: 58-65)

(A=8 maten: 66-73)

